



WHERE PRODUCT SPEAKS



RAGHUVEER INDUSTRIES

Plot No.-1512, Phase-III, G.I.D.C., Vatva, Ahmedabad - 382445. (Gujarat)

Office No: 95867 08959, 83200 49075

Mob: 98250 47350, 98250 47355

Email: raghuveer1512@yahoo.com



ABOUT US

RAGHUVVEER INDUSTRIES is basically latest and modern engineering machine shop serving the industry since 1998. Sahara Engineers is **leading Gear Coupling Manufacturer, Exporter, Supplier in India**. We can manufacture highly precised jobs as Per clients requirement. Our latest machinery and highly skilled work force Can meet industrial requirement in all aspect. We do not just manufacture Components but enhanced the value of manufactured component by Adding our technical expertise and skill. We mainly manufacture machine Component and machinery for still / paper / cement / textile and ceramic Industry. Our large well designed infrastructure provide us enough strength And facilitate to fulfill our customers requirement.

Under the powerful leadership of our founder **Mr. Narsinh Sekhalia**, we have been able to put across our advanced equipments to our valued clients.

Sahara Engineers is Ahmedabad based well-known Gear Coupling Manufacturers in India. Also, **we export Gear Coupling out of India** and supply all over India. We offer a wide range of Gear Couplings that are manufactured using state of the art machines and latest technology.

OUR QUALITY

We have always emphasized on the quality and the performance of our range which is a primary feature of our organization. For the overall development of our organization we provide only performance driven equipments to our valued clients. For the best quality of the machines we have employed quality analysts who are having the good experience in judging the quality of the supplies. The performance of the machines is **tested in critical and extreme conditions to ensure defect free machines**.

We have state-of-the-art manufacturing unit installed with sophisticated machines to ensure optimum production of our wide range of **Ferrous & Non Ferrous Metal Products**.

Our organization is listed among the most prominent manufacturers and suppliers of Gear Couplings. Offered couplings are precisely engineered in compliance with **industry laid parameters**, under strict supervision.

FLEXIBLE GEAR COUPLINGS



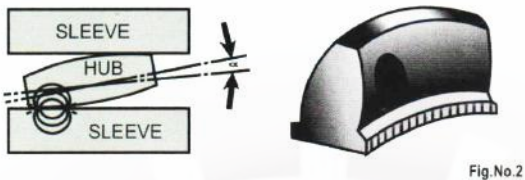
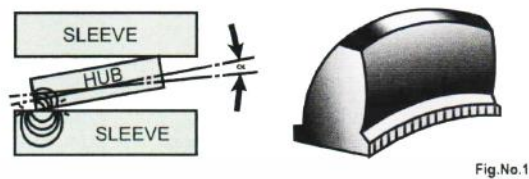
Under the misalignment condition of two shafts of the equipment, the teeth contact in case of straight cut hub will be as minimum as shown in the figure no.1. Under heavy loads the ends of the hub teeth will get damaged resulting in the excessive play between hub and sleeve, and, therefore, the reduction in life of coupling.

RAGHVEER INDUSTRIES TRIPLE - CROWNED TEETH

The triple crowned teeth hub is manufactured on a fully automatic hobbing machine with built in crowning attachment which is controlled by hydraulic and electronic systems. Under the misalignment condition of two shafts on the equipment, due to the curvature of teeth flank the contact area is much more and therefore, there is increase in life of coupling

MISALIGNMENT DETAILS:

In case of straight tooth coupling the maximum allowable angular misalignment (α) is 1.1/2 degree. And in case of RAGHVEER INDUSTRIES Triple Crowned Tooth Gear Coupling the misalignment is 7.1/2 degree.



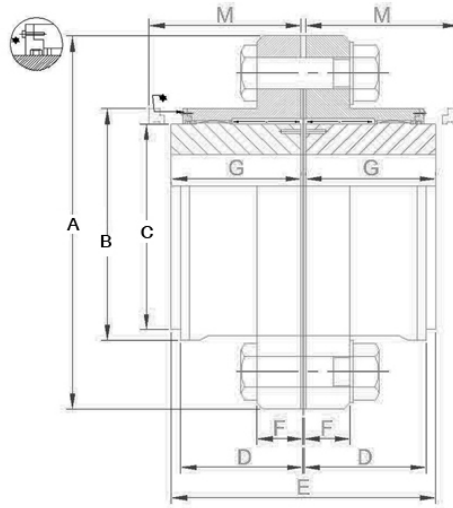
Driven Unit (Machinery)	Electric Motor or Steam Turbine	Gasoline or Diesel Engine 4 or more cyl.	Gasoline or Diesel Engine more than 6 cyl.
LIGHT Uniform or steady load never exceeding horse rating, infrequent starting, Agitators, Blowers, Can Filling Machines, Conveyors, Fans, Generators, Pumps, Steering Gear, Stokers	1.0	1.5	2.0
MODERATE Heavy interia, moderate stock, frequent starting, peak load do not exceed 125 per cent average horse power, uneven load, Conveyors, Feeders, Welding, Laundry Washers, Mixers, Paper Mills, Printing Presses, Screens, Textile Industry, Car Pullers	1.5	2.0	2.5
HEAVY Heavy shock conditions or frequent reversing peak loads do not 150 per cent average horse power, Uneven load, Cranes & Hoists, Crushers, Dredges, Elevators, Hammer Mills, Limber Industry, Machine Tools, Metal Mills, Oil Industry, Rubber Industry, Windlass	2.0	2.5	3.0

FEATURES

- Less Backlash.
- Compact Assembly.
- Larger Bore Capacities.
- High Power To Weight Ratio.
- Accomodates Angular, Parallel & Axial Alingments.
- Generally Used Upto 120°C. Can Be Used For Higher Tempretures By Using Proper Grade Of Grease or Oil.

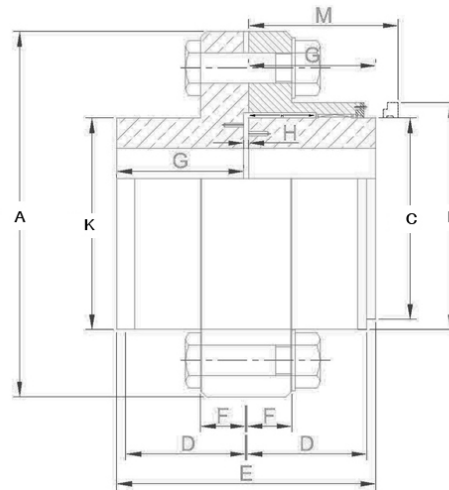


FULL GEAR COUPLINGS



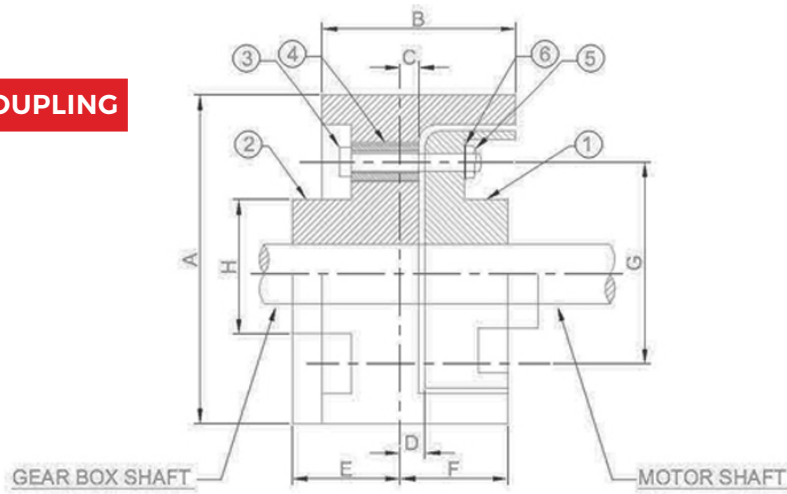
SIZE SFG	MAX. SORT MM	PILOT SORT MM	LOAD TORQUE KG.M	CAPACITY H.P. PER 100RPM	MAX. RPM	WT. WITH SOLID HUBS KG.	GD2	DIMEXIONS IN MM								
								A	B	c	D	E	F	G	H	M
100	35	10	50	7	8000	4.2	0.03	120	75	50	39.5	93	15	45	1.5	45
101	50	20	100	14	6300	10	0.14	170	110	65	49	115	17	55	2.5	65
102	60	30	250	35	5000	15	0.2	185	125	85	62	145	17	70	2.5	80
103	75	40	450	63	4000	26	0.48	220	150	105	78	175	20	85	2.5	105
104	90	50	850	119	3350	40	0.95	250	175	130	96	215	20	105	2.5	125
105	110	60	1300	182	2800	62	1.9	290	200	155	106	230	25	110	5.0	140
106	125	75	2000	280	2500	85	3	320	230	175	117	260	25	125	5.0	155
107	140	90	3500	490	2100	120	5.25	350	260	205	134	290	25	140	5.0	175
108	160	105	4500	630	1900	180	8.5	380	290	230	147	320	25	155	5.0	190
109	180	125	5600	784	1700	210	15	430	330	250	156	340	25	165	5.0	205
110	220	140	8200	1148	1400	315	30.5	490	390	310	171	370	25	180	5.0	220
111	260	160	11000	1536	1250	550	58	545	445	350	192	410	30	200	5.0	240
112	300	180	14700	2053	1120	710	88	590	490	400	231	490	30	240	5.0	280
113	330	200	20000	2793	1000	980	138	680	555	440	242	535	35	260	7.5	310
114	370	220	28600	3994	900	1320	291	730	610	500	266	575	35	280	7.5	330
115	410	250	34750	4852	800	1700	353	780	660	540	305	655	35	320	7.5	370
116	455	300	60000	8378	710	2550	680	900	755	625	335	720	45	350	10.0	425
117	520	375	83350	11917	630	3620	1235	1000	855	720	386	820	45	400	10.0	460
118	610	450	113000	15778	560	4860	1965	1100	950	810	430	920	55	450	10.0	510
119	710	520	149000	20805	500	6380	3012	1250	1050	910	446	1000	55	485	15.0	560

HALF GEAR HALF RIGID COUPLINGS



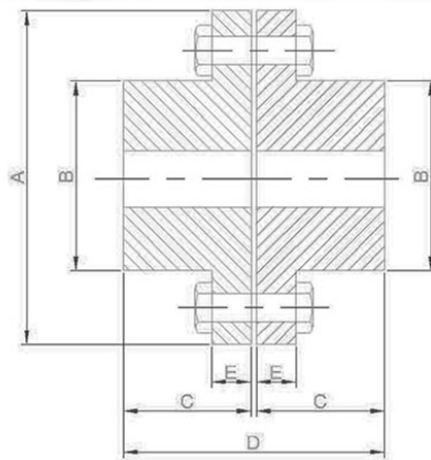
SIZE SHG	MAX.BORE MM.		PILOT BORE MM	LOAD CAPACITY		MAX. RPM	WT. WITH SOLID HUBS KG.	GD2 KG. M	DIMENSIONS IN MM										
	GEAR	RIGID		TORQUE KG. M	H.P. PER 100 RPM				A	B	C	D	E	F	G	H	J	K	M
100	35	50	10	50	7	8000	4.2	0.03	120	75	50	39.5	93	15	45	1.5	46.5	70.0	45
101	50	60	20	100	14	6300	10	0.14	170	110	65	49	115	17	55	2.5	57.5	85.0	65
102	60	75	30	250	35	5000	15	0.2	185	125	85	62	145	17	70	2.5	72.5	110.0	80
103	75	90	40	450	63	4000	26	0.48	220	150	105	78	175	20	85	2.5	87.5	130.0	105
104	90	110	50	850	119	3350	40	0.95	250	175	130	96	215	20	105	2.5	107.5	160.0	125
105	110	130	60	1300	182	2800	62	1.9	290	200	155	106	230	25	110	5.0	115.0	185.0	140
106	125	150	75	2000	280	2500	85	3	320	230	175	117	260	25	125	5.0	130.0	215.0	155
107	140	170	90	3500	490	2100	120	5.25	350	260	205	134	290	25	140	5.0	145.0	240.0	175
108	160	200	105	4500	630	1900	180	8.5	380	290	230	147	320	25	155	5.0	160.0	285.0	190
109	180	220	125	5600	784	1700	210	15	430	330	250	156	340	25	165	5.0	170.0	315.0	205
110	220	260	140	8200	1148	1400	315	30.5	490	390	310	170	370	25	180	5.0	185.0	370.0	220

FLEXIBLE BREAK COUPLING



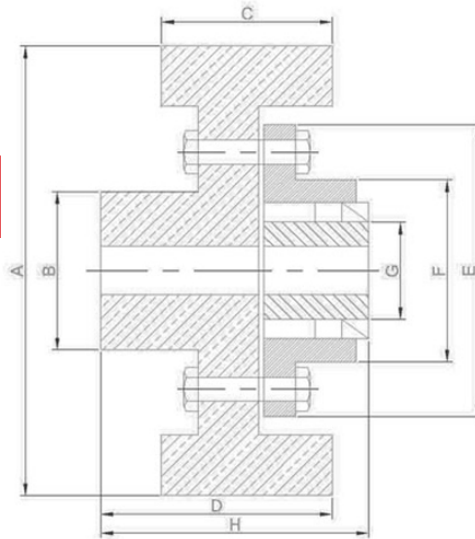
COUPLING SIZE	ØA	B	C	D	E	F	ØG	ØH	FINISH BORE (I)		WEIGHT (KG)	TORQUE	HP/RPM	CD ² KGM ²
									MIN	MAX				
SFBC 100	100	65	3	6	32	32	64	45	16	25	4	15	0.016	0.02
SFBC 150	150	80	3	6	42	42	92	65	16	30	10	36	0.028	0.09
SFBC 160	160	90	3	6	42	42	96	70	16	30	12	36	0.030	0.13
SFBC 180	180	95	3	6	47	47	119	75	16	40	16	45	0.050	0.32
SFBC 200	200	102	6	10	57	73	127	90	16	55	18	63	0.050	0.32
SFBC 250	250	127	6	10	82	98	142	100	25	55	28	90	0.125	1.00
SFBC 300	300	152	6	10	89	105	197	127	25	75	61	250	0.350	2.50
SFBC 315	315	160	6	10	95	95	220	130	25	80	65	300	0.420	2.85
SFBC 400	400	180	3	6	147	156	250	150	25	100	130	360	0.500	9.94
SFBC 450	450	184	0	3	133	137	267	155	45	110	172	450	0.630	15.40
SFBC 500	500	210	6	9	144	159	290	200	45	125	250	950	1.380	27.50

RIGID COUPLING



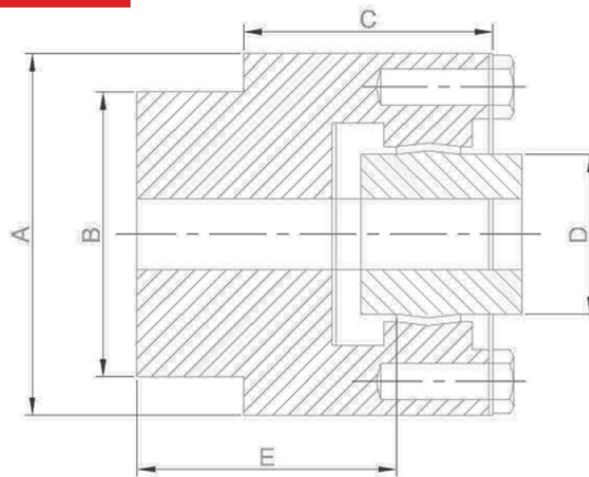
COUPLING SIZE	FINISH BORE		ØA	ØB	C	ØD	E	WEIGHT (KG)	MAX. RPM
	MIN	MAX							
SRC 100	10	50	120	70	46.5	93	15	7	8000
SRC 101	20	60	170	85	57.5	115	17	14	6300
SRC 102	30	75	185	110	72.5	145	17	21	5000
SRC 103	40	90	220	130	87.5	175	20	35	4000
SRC 104	50	110	250	160	107.5	215	20	52	3350
SRC 105	60	130	290	185	115	230	25	75	2800
SRC 106	75	150	320	215	130	260	25	108	2500
SRC 107	90	170	350	240	145	290	25	145	2100
SRC 108	105	200	380	285	160	320	25	175	1900
SRC 109	125	220	430	315	170	340	25	268	1700
SRC 110	140	260	490	370	185	370	25	388	1400

BREAK DRUM WITH FLEXIBLE GEARED COUPLING

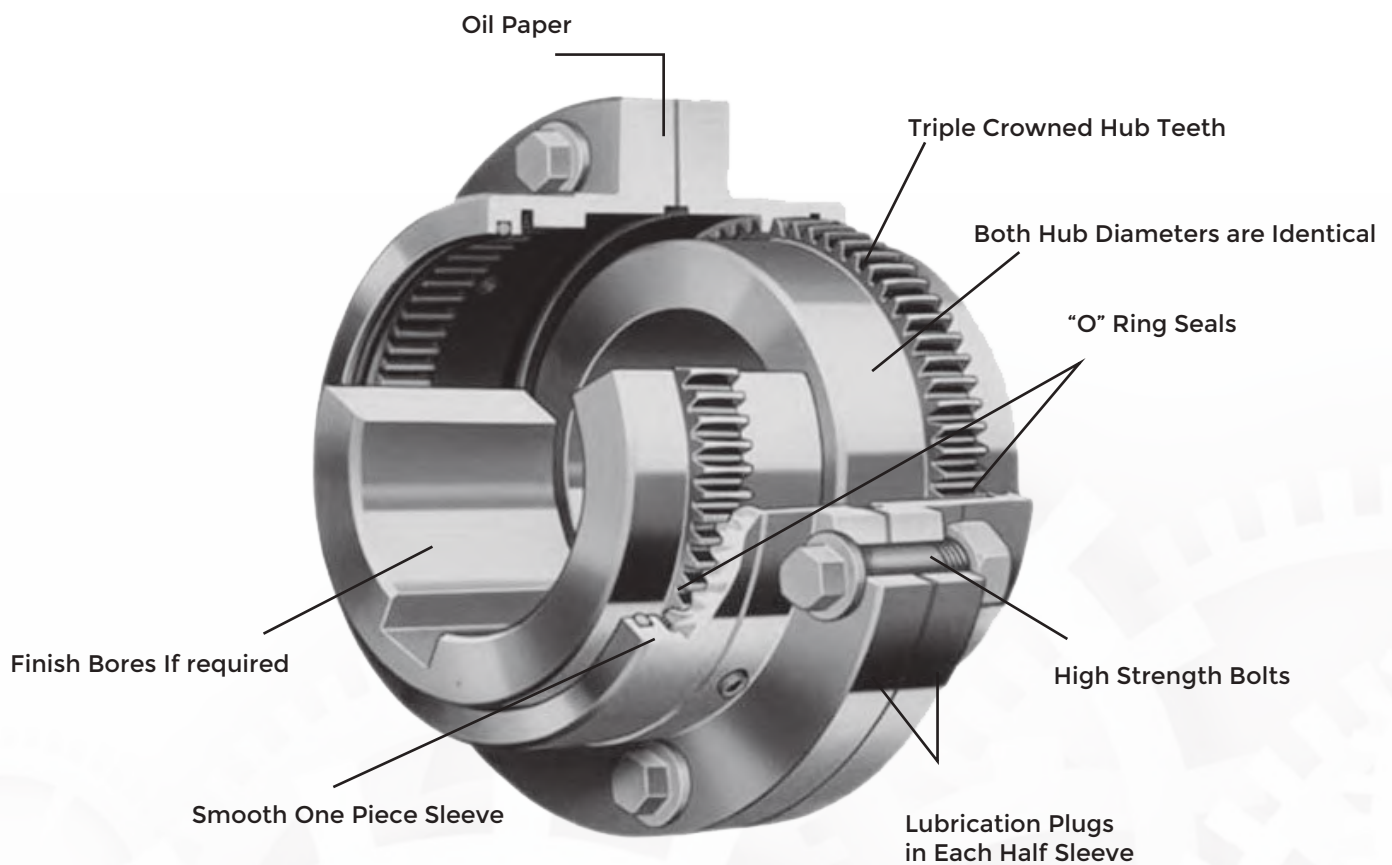


COUPLING SIZE	FINISH BORE		ØA	ØB	C	ØD	E	F	G	H	WEIGHT (KG)	TORQUE	MAX.RPM
	MIN	MAX											
SBDG 150	10	30	150	65	80	95	120	75	50	110	11.5	50	8000
SBDG 160	10	35	160	70	90	110	120	75	50	120	13.7	50	8000
SBDG 200	20	45	200	90	100	120	170	110	65	134	23.5	100	6300
SBDG 250	20	45	250	105	120	130	170	110	65	134	34.2	100	6300
SBDG 250	30	55	250	105	120	130	185	125	85	149	41	250	5000
SBDG 300	40	70	300	130	150	170	220	150	105	192	64.5	450	4000
SBDG 300	50	85	300	130	150	170	250	175	130	212	72	850	3350
SBDG 375	50	85	375	135	165	185	250	175	130	218	140	850	3350
SBDG 400	50	85	400	150	180	210	250	175	130	225	152	850	3350
SBDG 400	60	105	400	150	180	210	290	200	155	230	160	1300	2800
SBDG 450	60	105	450	170	200	220	290	200	155	235	178	1300	2800
SBDG 500	75	120	500	210	225	340	320	230	175	275	225	2000	2500

BREAK DRUM GEARED COUPLING



COUPLING SIZE	FINISH BORE		A	B	C	D	E	WEIGHT (KG)	TORQUE	MAX. RPM
	MIN	MAX								
SBDGC 4"	12	45	101.6	80	70	65	103	10	100	8000
SBDGC 5"1/2	15	50	139.7	82	90	70	130	19	100	6300
SBDGC 6"	15	50	152.4	82	90	70	130	22	250	6300
SBDGC 7"	20	55	177.8	90	100	85	140	33	450	5000
SBDGC 8"	20	70	203.2	120	102	120	143	47	850	4000
SBDGC 10"	20	80	254	130	120	125	160	82	2000	3350



Plot No.-1512, Phase-III, G.I.D.C., Vatva, Ahmedabad - 382445. (Gujarat)

Office No: 95867 08959, 83200 49075

Mob: 98250 47350, 98250 47355

Email: raghuveer1512@yahoo.com